

Nome Prodotto

Cuscino antidecubito in Fibra Siliconata Cava Devimed Igni Dahlia.







Codice	Misure (cm)	Portata (kg)
05.06.31377TX-38	38 x 38 x 9	120
05.06.31377TX-40	40 x 40 x 9	120
05.06.31377TX-42	42 x 42 x 9	120
05.06.31377TX-45	45 x 45 x 9	120
05.06.31377TX-50	50 x 45 x 9	120

Destinazione d'uso

Dispositivo destinato alla prevenzione delle piaghe da decubito in soggetti che devono mantenere la posizione seduta per prolungati periodi di tempo.

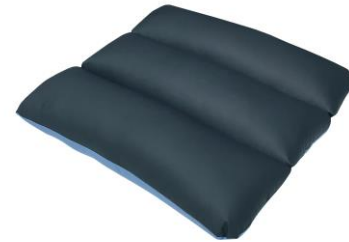
Descrizione

Il cuscino DEVIMED IGNI DAHLIA è composto da un rivestimento in 50% Igni Dahlia (tessuto traspirante, impermeabile, ignifugo, bielastico e Sanitized) e 50% cotone con lavorazione trapuntata in 3 canali, contenente fibra siliconata cava a 17 denari H.C.S. Il fenomeno del bottom out (foccare il fondo) è evitato grazie allo spessore di 9 cm.

Materiali	
Imbottitura	Fibra Siliconata Cava
Rivestimento	50% Igni Dahlia e 50% Cotone
Manutenzione e Pulizia	
	Lavaggio Max 40° C
	Non Stirare
	Non Candeggiare
	Non Utilizzare l'Asciugatrice
Conservazione e Smaltimento	
Si consiglia l'uso ad un solo utente	
Conservare al riparo da fiamme libere e fonti di calore	
Smaltire il dispositivo rispettando le normative vigenti in materia di tutela dell'ambiente e raccolta differenziata	
Confezione e Nr. Articoli	
Scatola	1 Pezzo
Garanzia	
Europea	24 mesi per difetti di fabbricazione ad esclusione delle parti consumabili
Riferimenti del Prodotto	
Fabbricante	Demarta Virginio S.a.S.
Classe di Dispositivo 93/42	Classe I
Codice ISO	04.33.03.003
Codice CND	Y033303
Codice RDM	652734/R

Product Name

Siliconised Fiber Cushion Devimed Igni Dahlia.







Code	Dimensions (cm)	Capacity (kg)
05.06.31377TX-38	38 x 38 x 9	120
05.06.31377TX-40	40 x 40 x 9	120
05.06.31377TX-42	42 x 42 x 9	120
05.06.31377TX-45	45 x 45 x 9	120
05.06.31377TX-50	50 x 45 x 9	120

Use

Device designed for the prevention of bedsores in subjects who have to maintain the sitting position for a long time.

Description

The DEVIMED IGNI DAHLIA cushion is composed of an external cover in 50% Igni Dahlia (breathable, waterproof, fireproof, two way stretchable and Sanitized fabric) and 50% cotton with quilting in 3 sections, containing 17 denier Hollow Conjugated Siliconised Polyester Fiber (H.C.S.). The bottom out phenomenon is avoided thanks to the thickness of 9 cm.

Materials	
Padding	Hollow Conjugated Siliconised Polyester Fiber
External cover	50% Igni Dahlia e 50% Cotton
Maintenance and Cleaning	
	Water temperature not above 40° C or 105° F
	Do not iron
	Do not bleach
	Do not dry in dryer
Storage and Disposal	
Single-user Product	
Keep away from heat, sparks, open flame or other sources of ignition	
Dispose of the device in compliance with current regulations on environmental protection and separate waste collection	
Package and Nr.Items	
Box	1 Piece
Warranty	
European	24 months for manufacturing defects with the exception of consumable parts
Product References	
Manufacturer	Demarta Virginio S.a.S.
Directive 93/42	Class I
ISO Code	04.33.03.003
CND Code	Y033303
RDM Code	652734/R